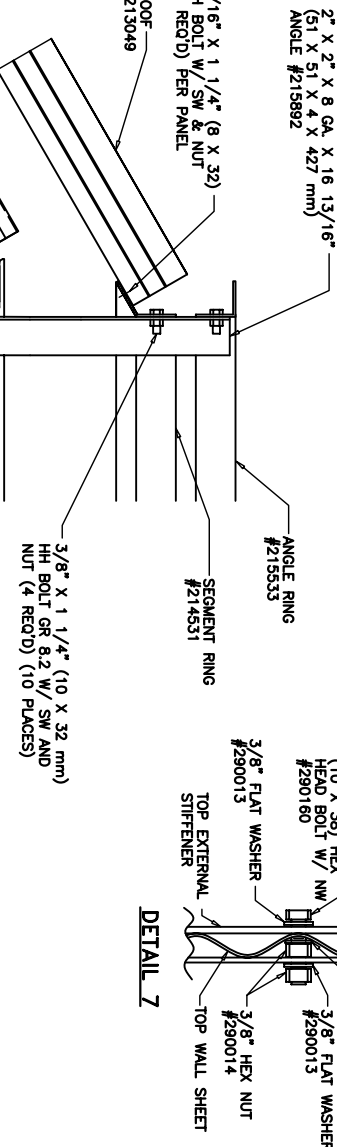


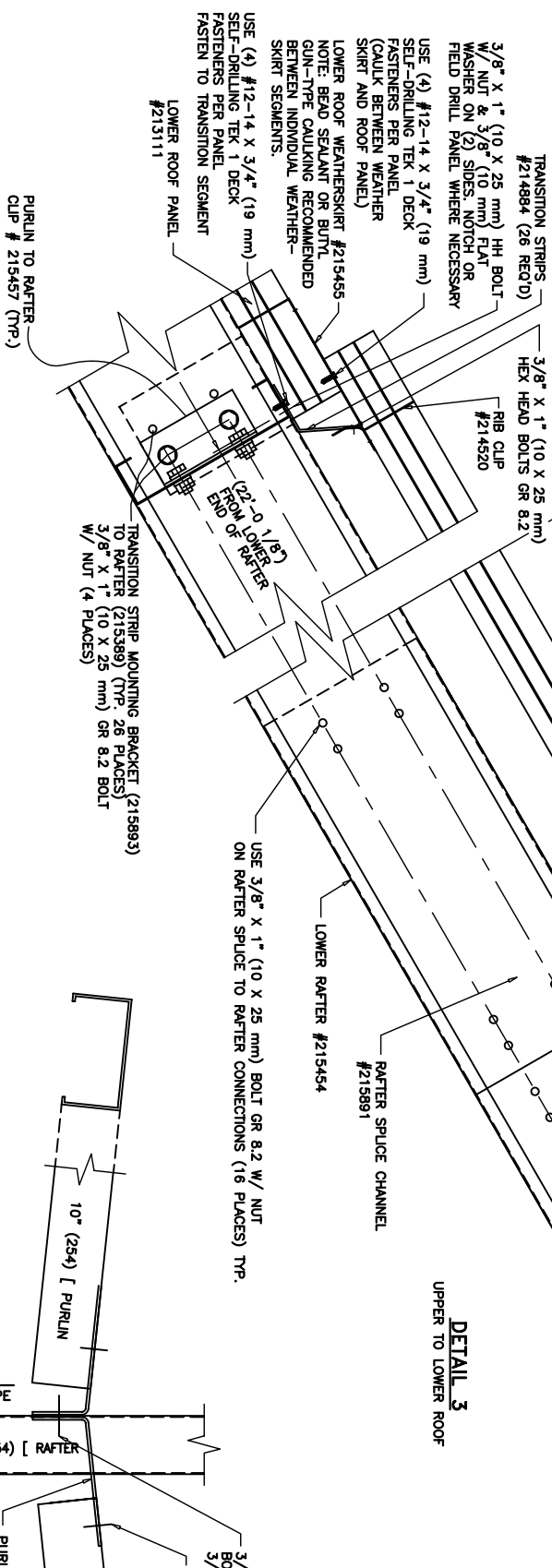
FOR: INTERNALLY STIFFENED SILO



SUPPORT RING BRACKET #214359
(36 REQ'D) ATTACH TO 7TH HOLE
FROM BOTTOM OF PANEL

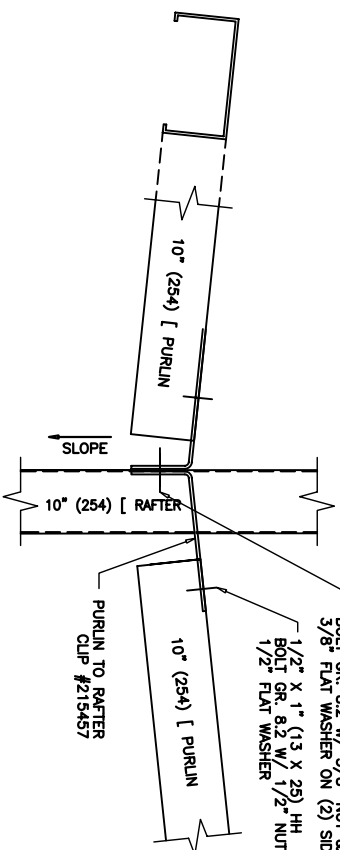
[PURLIN

REINFORCING RIB
#214694

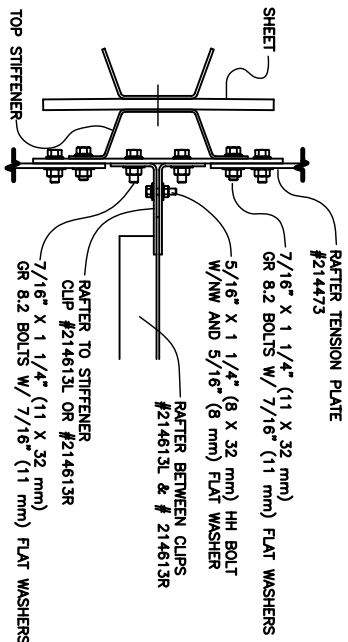


DETAIL 2
R TO LOWER ROOF

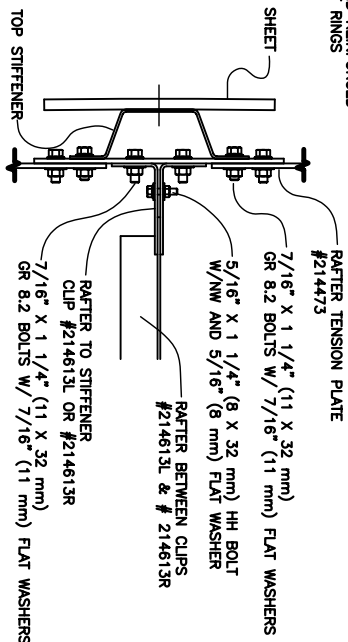
DETAIL 4
TOP VIEW OF RAFTER
TO PURLIN CONNECTION



SECTION B-B



SECTION A-A



5/16" x 1 1/4" (8 X 32)
HH BOLT W/ SW & NUT
(1 REQ'D) PER PANEL

UPPER ROOF
PANEL #213049

3/8" x 1" (10 X 25 mm) BOLT GR 8.2
W/ NUT & 3/8" (10 mm) FLAT WASHER
ON (2) SIDES (2 PLACES) TYP.

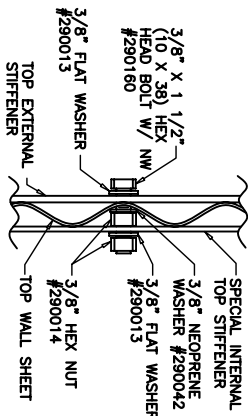
3/8" x 1" (10 X 25 mm) BOLT GR 8.2
W/ NUT & 3/8" (10 mm) FLAT WASHER
ON (2) SIDES (2 PLACES) TYP.

COMPRESSION
#210179

3/8"
HH
NUT

DETAIL 4
ROOF PANEL AND R
TO SEGMENT AND REL
SEGMENT RINGS

DETAIL 7

[illegible]

